

# ROOSEVELT TECHNOLOGY CENTER

11399 16th COURT NORTH  
ST. PETERSBURG, FLORIDA

UP TO 67,259 RSF AVAILABLE

GATEWAY SUBMARKET

## CLASS A OFFICE SPACE - FOR LEASE

HIGH TECH SPACE ~ 100% GENERATOR BACK UP ~ EXCELLENT INTERSTATE LOCATION



### BUILDING HIGHLIGHTS:

- Suite 200 - 43,979 RSF Entire Floor (Available 6/1/16)
- Suite 300 - 23,280 RSF Entire Floor (Available 6/1/16)

Total - Up to 67,259 RSF Contiguous Available

- \$23.00 - \$24.00/RSF Gross Lease Rate
- Monument & Building Signage Available
- 1,400kw Caterpillar Generator + 4,000 Gallon Fuel Tank & UPS System for 100% Building Back Up
- 5/1,000 RSF Parking Ratio with 100 covered spaces



FOR MORE INFORMATION, PLEASE CONTACT:

**MICHAEL S. TALMADGE**

727.214.4650

[mtalmadge@echelonre.com](mailto:mtalmadge@echelonre.com)

[www.eresproperties.com](http://www.eresproperties.com)

**ECHELON**



Echelon Real Estate Services, LLC  
Licensed Real Estate Broker

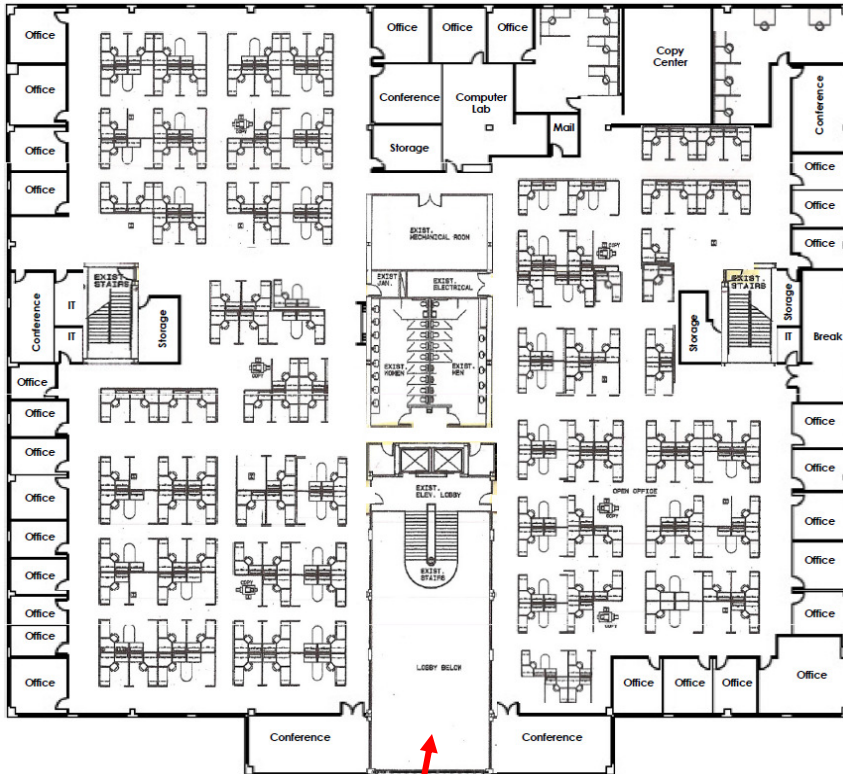
# ROOSEVELT TECHNOLOGY CENTER

11399 16th COURT NORTH  
ST. PETERSBURG, FLORIDA

UP TO 67,259 RSF AVAILABLE

GATEWAY SUBMARKET

## As Built Space Plan



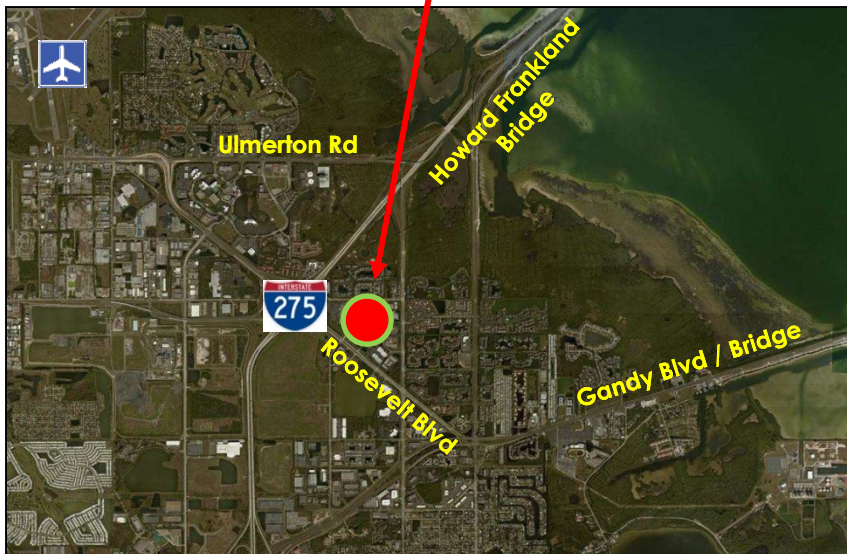
**Suite 200 - 43,979 RSF  
As Built Space Plan**

- 27 offices
- 150 workstations

(Workstations may not be available)

## LOCATION HIGHLIGHTS:

- Premier Central Location: within 25 minutes of 80% of all Tampa Bay households.
- Convenient access to Downtown St. Petersburg & the rest of the Tampa Bay Area via I-275, Howard Frankland & Gandy Bridges.
- The building is located within 10 – 15 minutes of both the St. Petersburg/Clearwater & Tampa International Airports.



FOR MORE INFORMATION, PLEASE CONTACT:

**MICHAEL S. TALMADGE**

727.214.4650

mtalmadge@echelonre.com

www.eresproperties.com

**ECHELON**

Echelon Real Estate Services, LLC  
Licensed Real Estate Broker

