

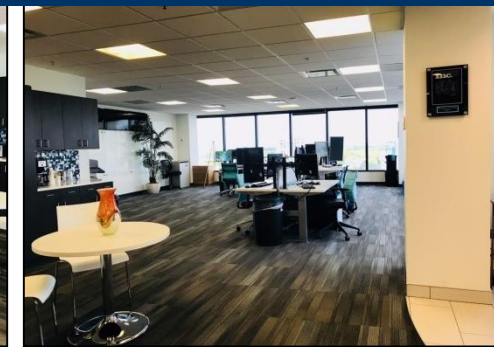
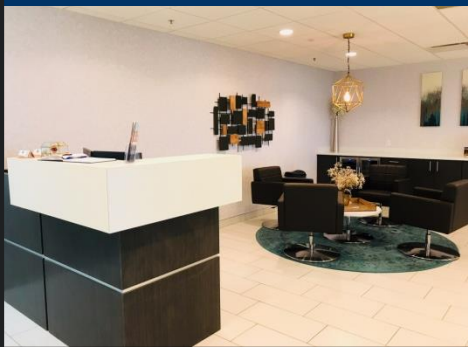
Morgan Stanley Tower

Suite 1140

**3,064 RSF Available
DIRECT WATER VIEWS!**



Ultra Class A Office Finishes + High End Furniture



- **This office space offers the best PANORAMIC + DIRECT water views now available in downtown St Petersburg!**
- Short Term: 27 Months or Long Term: 60+ Months
- 3,064 RSF - Available: November 1, 2020
- Space offers 140 LF of full height window glass with 11th Floor Views of Tampa Bay.
- \$31.25 per RSF Gross Lease Rate or \$7534/month. Office Furniture will be additional cost.
- Tenant spent over \$65/RSF to complete the Tenant Finish Build-out, which is almost 1.5x the market average. Glass walls throughout entire suite!
- Six (6) Parking Spaces in the onsite parking garage + Additional parking spaces are available in the adjacent Mid-Core Garage.



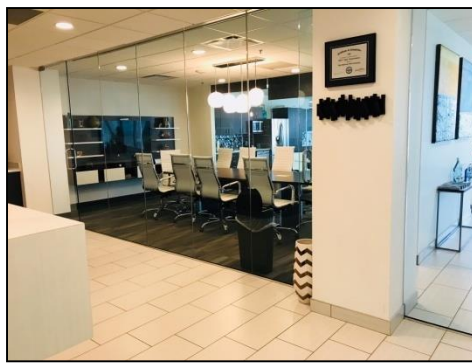
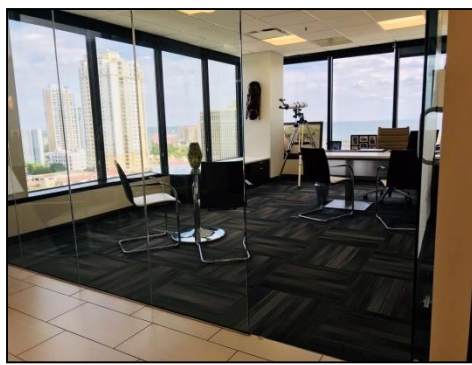
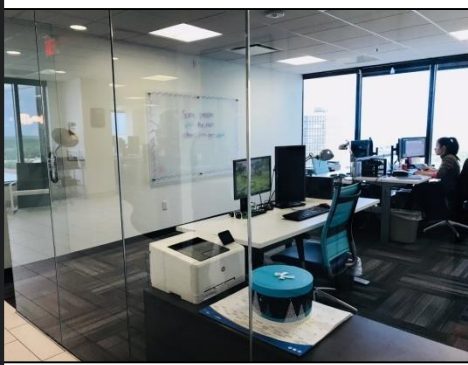
Echelon Real Estate Services, LLC
Licensed Real Estate Broker

For More Information Please Contact:

Michael S. Talmadge
mtalmadge@echelonre.com
727.214.4650
www.eresproperties.com

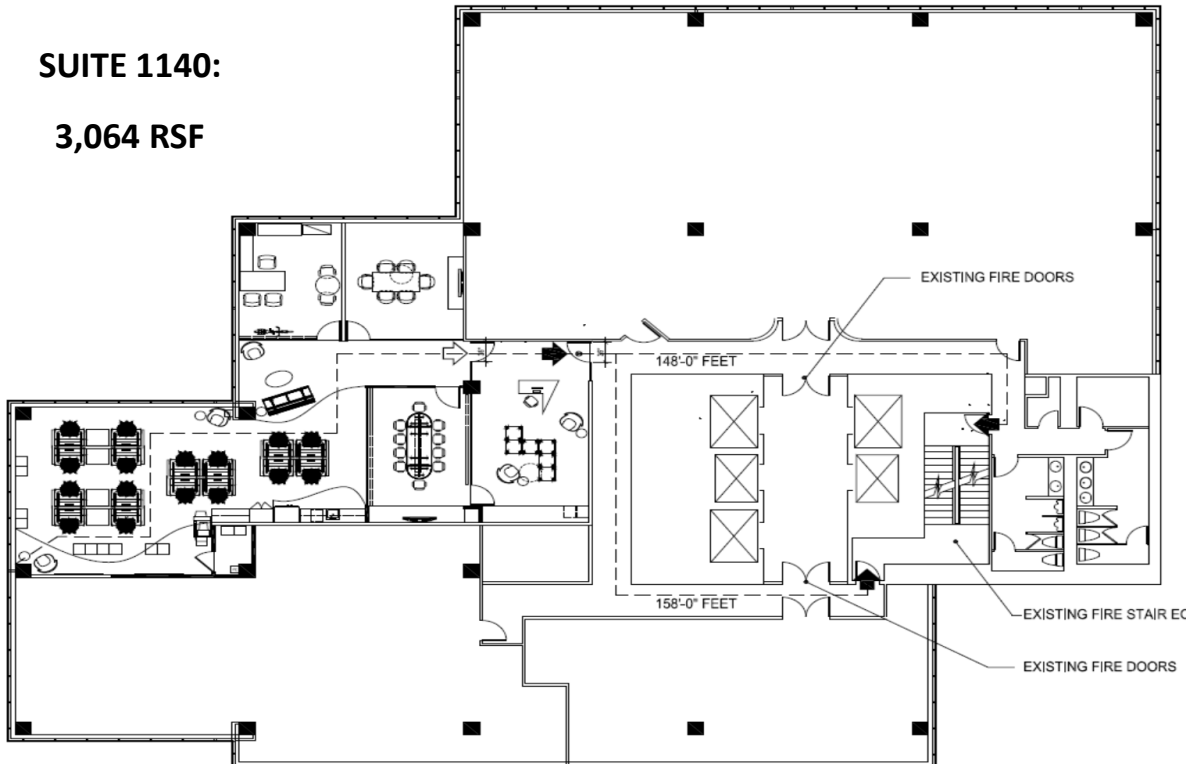
Morgan Stanley Tower

ULTRA CLASS A SPACE WITH DIRECT WATER VIEWS



SUITE 1140:

3,064 RSF



For More Information Please Contact:

Michael S. Talmadge

mtalmadge@echelonre.com

727.214.4650

www.eresproperties.com

ECHELON



Echelon Real Estate Services, LLC
Licensed Real Estate Broker