

# CLASS A OFFICE SPACE – FOR LEASE DOWNTOWN ST. PETERSBURG



## 700 CENTRAL

700 Central Ave, St. Petersburg, Florida 33701

- **NO CHARGE PARKING!! REPRESENTS UP TO A \$3.00 /RSF PER YEAR SAVINGS OVER PAY FOR PARKING SCENARIO.**
- 4/1,000 SF surface parking - Covered Reserved Spaces are Available.
- Below Market Full Service Lease Rate - \$19.00/RSF
- Up to 7,332 RSF Available
- Available Suite Sizes: 1,190 RSF - 4,588 RSF
- On-site Property Management
- Great Downtown St. Petersburg Location - easy access to I-275.

**MICHAEL S. TALMADGE**  
(727) 214-4650  
mtalmadge@echelonre.com



Main Lobby



Main Entrance &  
Outdoor Seating

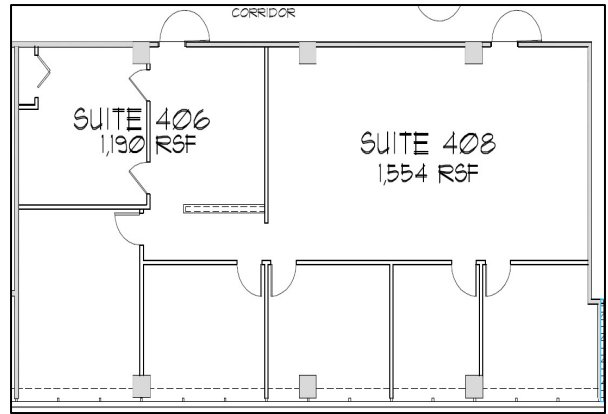
**ECHELON**  
Echelon Real Estate Services, LLC  
235 Third Street S, Suite 300  
St. Petersburg, Florida 33701

[www.eresproperties.com](http://www.eresproperties.com)

# 700 CENTRAL CLASS A OFFICE SPACE FOR LEASE



**SUITE 302 - 4,588 RSF**



**SUITE 406 - 1,190 RSF +  
SUITE 1,554 RSF = 2,744 RSF CONTIGUOUS**



**Echelon Real Estate Services, LLC**  
235 Third St S, Suite 300  
St. Petersburg, Florida 33701

*For More Information:*

**Michael S. Talmadge**  
mtalmadge@echelonre.com  
[www.eresproperties.com](http://www.eresproperties.com)

**727.214.4650**

700 Central is located in the heart of vibrant downtown St. Petersburg immediately off I-275 & within close proximity to County Courthouse, Post Office, main library, Chamber of Commerce, retail shops, restaurants, museums, Albert Whitted Airport, & the marina.

Located within 45 minutes of 85% of all households in the Tampa Bay Area, 700 Central is a quick drive from Clearwater, Tampa, St. Pete, Sarasota, and Bradenton!

No warranty or representation, express or implied, is made as to the accuracy of the information contained herein, and same is submitted subject to errors, omissions, changes of price, rental or other conditions, withdrawal without notice and to any special listing conditions imposed by owner.